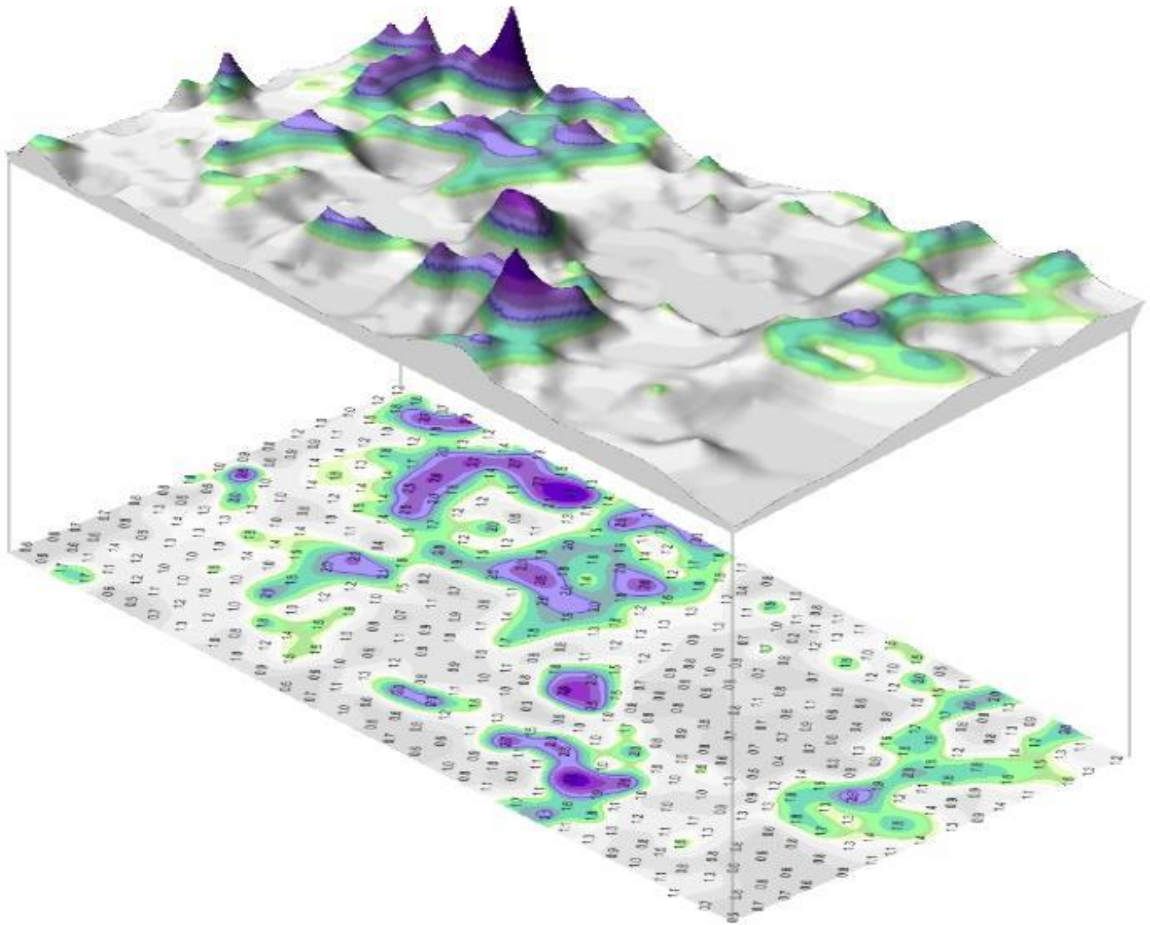


# GrayStone

Exploration Labs, Inc.

## IODINE GEOCHEMICAL EXPLORATION SURVEYS

Survey Design, Collection, Analysis, Interpretation and Mapping Services



**Graystone Exploration Labs, Inc**

Address: 15400 W 44<sup>th</sup> Ave. Suite 21,  
Golden, Colorado, USA, 80403.

Website: [www.graystonelabs.com](http://www.graystonelabs.com)

Email: [chuck@graystonelabs.com](mailto:chuck@graystonelabs.com)

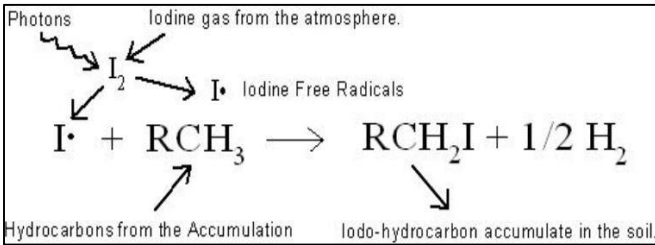
Phone: 303-278-3252

**Graystone Exploration Laboratories, Inc.**

Founded in 1982 GrayStone Exploration Labs has been providing Geochemical Exploration services to the petroleum and minerals industries for over 30 years.

**Why Iodine Geochemical Exploration Surveys?**

Iodine has a number of unique properties that make it an excellent choice for geochemical exploration surveys. As the figure below demonstrates soil iodine originates from the atmosphere, eliminating varying initial conditions. Like all halogens, iodine is a strong oxidizer and reacts readily with hydrocarbons. Volatile hydrocarbons combine with iodine changing hydrocarbon gases into iodo-hydrocarbon solids. These compounds can be used to track hydrocarbon seepage. GrayStone specializes in these near surface soil iodine surveys.



Geochemical Reaction for the generation of Iodo-Hydrocarbons in the soil.

**When Should I acquire an Iodine Geochemical Exploration Survey?**

Graystone Exploration Labs can tailor survey designs to match your requirements, whether you want to do some reconnaissance over an area of interest, conduct a full geochemical survey, de-risk a prospect or track the development of your reservoir we can help.

**What are the typical Deliverables?**

Geochemical Iodine Anomaly Map. (In PDF format).  
Acquisition, Processing and Interpretation Reports.

**How Do I Get A Quote?**

For a full quote on the services available please contact Jim Dirstein at Total Depth.

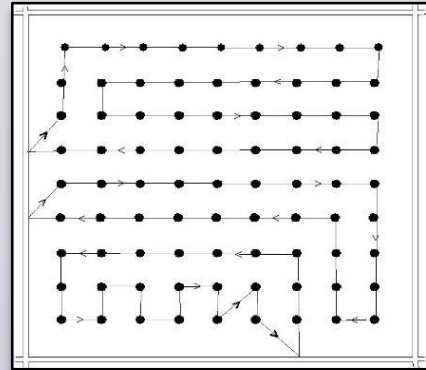


**Total Depth Pty Ltd.**  
21 Churchill Avenue,  
Subiaco, WA, 6008, Australia  
Tel: (618) 9382 4307  
Email: info@totaldepth.com.au  
Internet Address: www.totaldepth.com.au

**Iodine Geochemical Exploration Surveys**

**Survey Design**

Iodine geochemical surveys will be designed to help you achieve your objective.



**Data Collection**



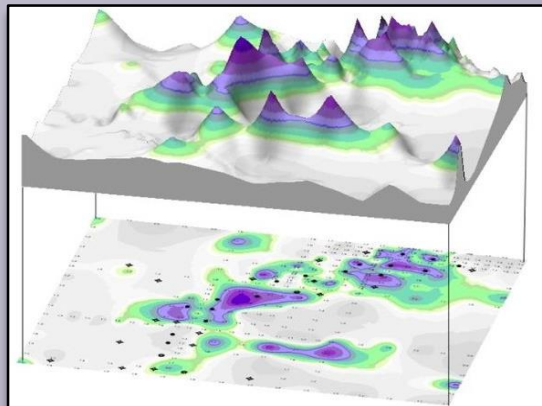
Data collection of soil samples will be carried out by a field technician over the survey area.

**Geochemical Analysis**

The soil samples collected will be analysed in Graystones chemical laboratories.



**Interpretation and Mapping Services**



The final iodine anomaly attribute maps are gridded and interpreted with the integration of other geophysical and geological data.